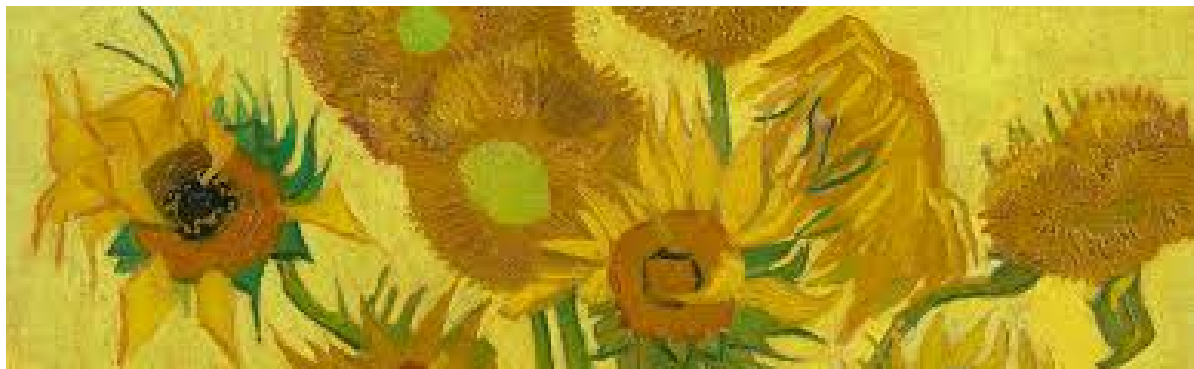




ART SCHEMES OF WORK MILTON SCHOOL

KEY STAGES 1 - 4



Class 1, class 2, class 3, class 4, class 5, class 6, Class 7 are to cover the art curriculum as part of 'integrated studies' units.

They learn to draw, paint and sculpt using a range of media, as well as design and create aesthetically pleasing objects in two and three dimensions. They learn about the achievements of great artists and designers and work with local artists to exhibit their artwork.

At KS2 the children begin to use a **sketchbook** as a place to focus on shape, to practice drawing certain features, and to gather information for use on a larger piece of work;

The sketchbook can be used to practice drawing techniques such as shading, perspective and drawing from different viewpoints;

As well as the sketch itself the children might record details about the item being drawn or sketched for future reference;

The sketchbook might include sketches and working drawings for ideas of things the children want to make.

The children might make investigative sketches. Through their drawings they could gather information to give specific knowledge of how things are made or work.

Y 9 Y10 and Y11 will also cover Art as part of their weekly options afternoon.

All pupils in Milton School are involved in the 'Picture This' Art project as part of the Rotherham Children's Festival and will have the opportunity to have their artwork displayed on public exhibition in the summer term. (current climate permitting)

